

Mountain Top Boys Home . . .

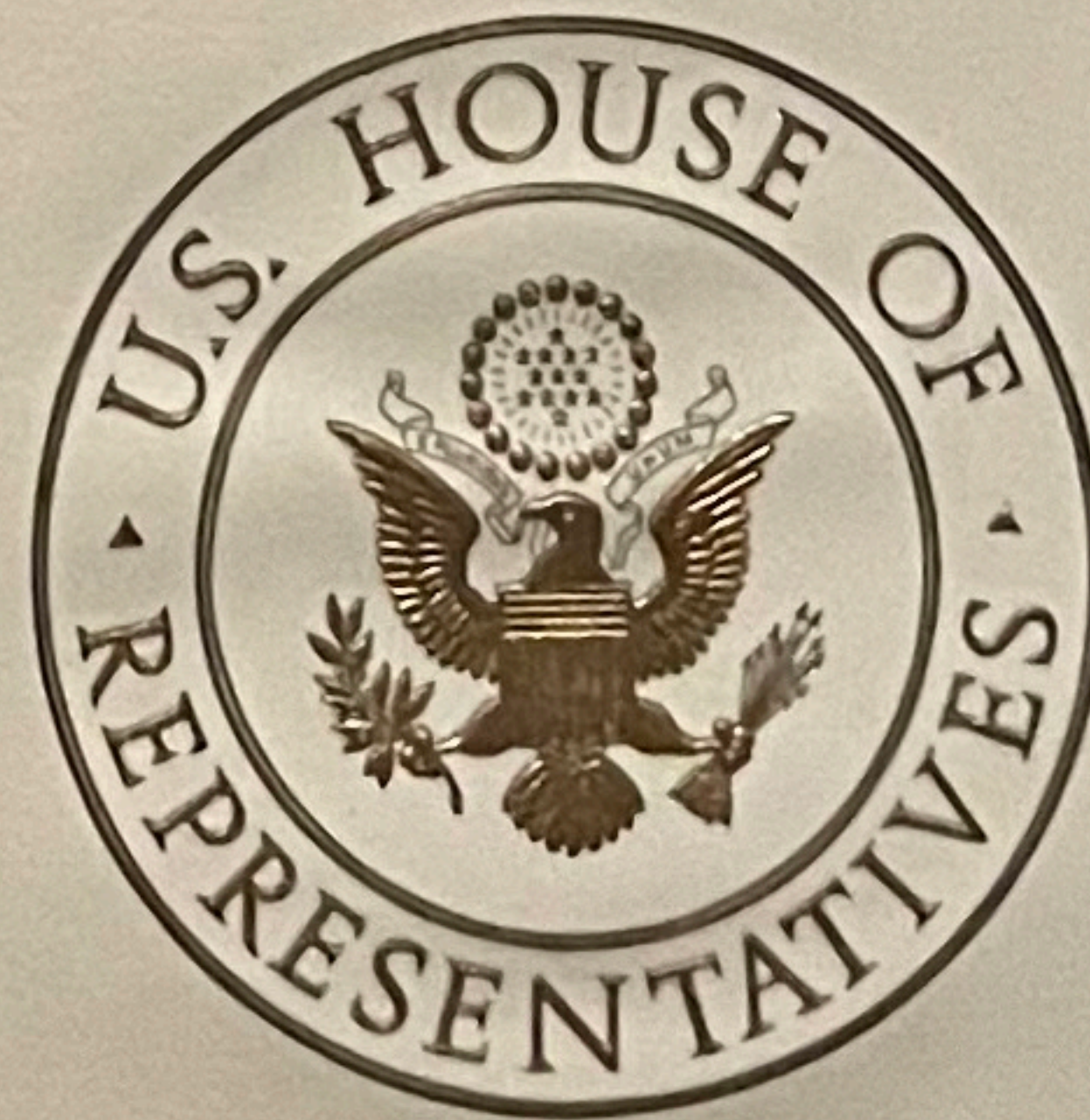


An Alternative for
Troubled Youth

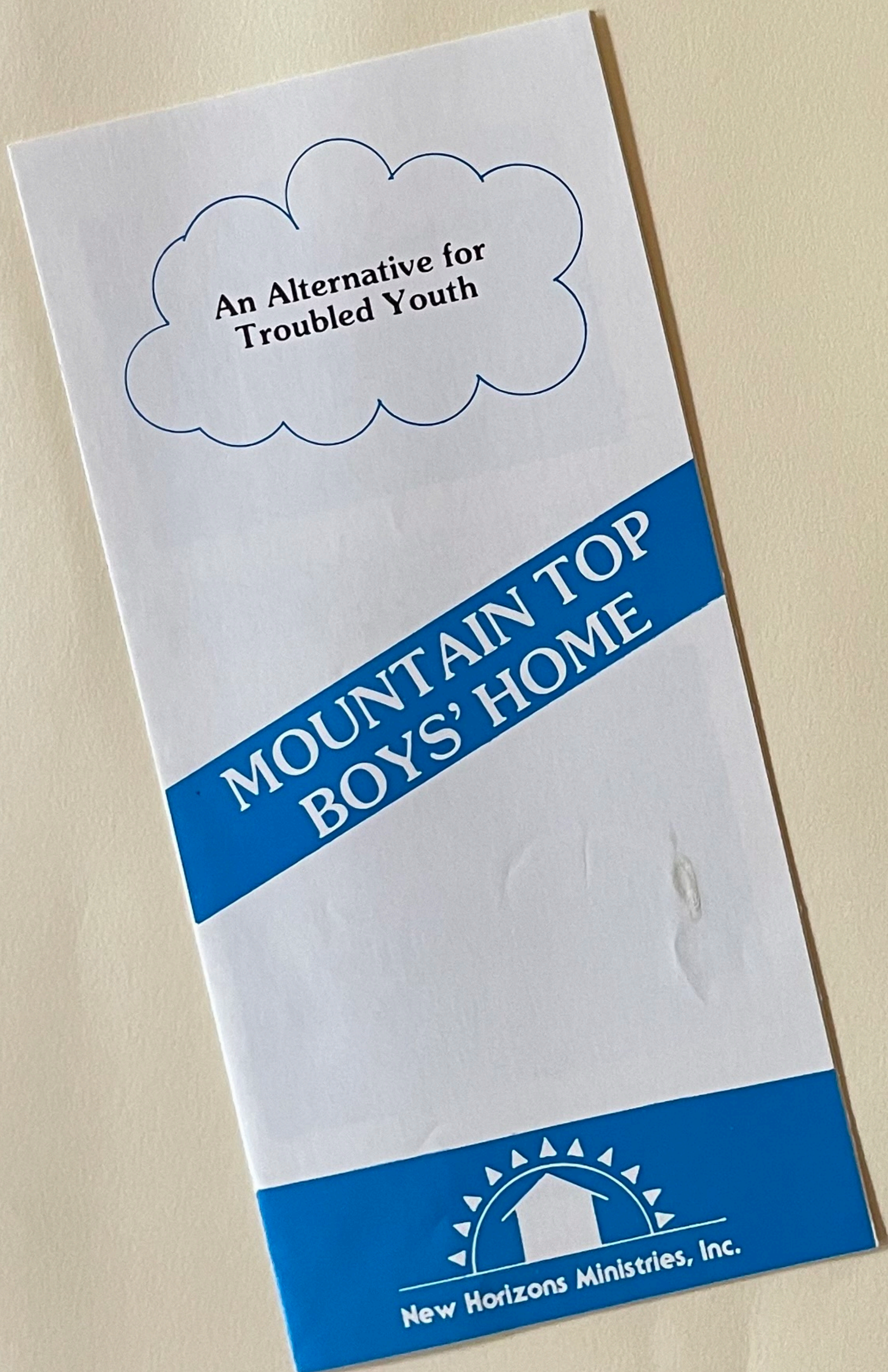
**MOUNTAIN TOP
BOYS' HOME**


New Horizons Ministries, Inc.

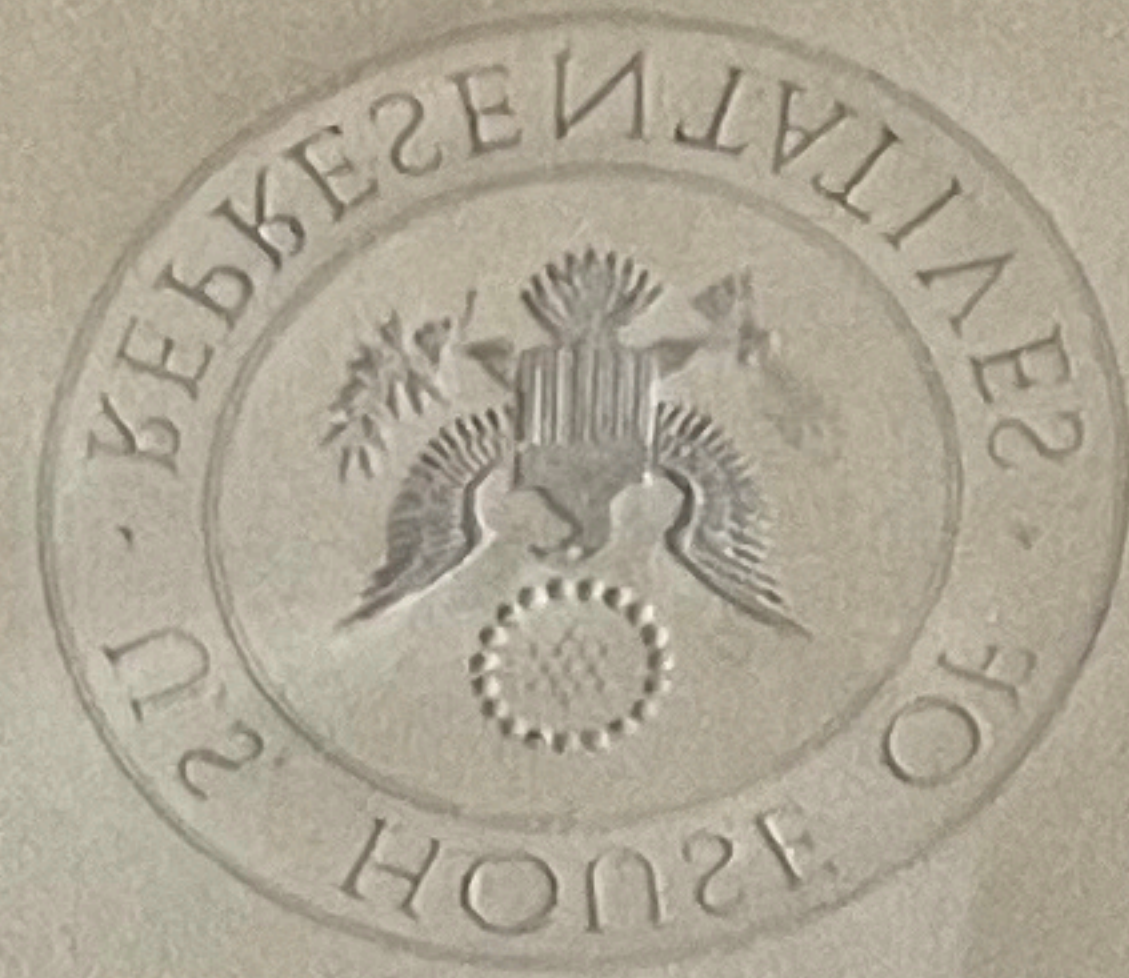
In September, 1990, the Vinings Rotary Club voted to donate \$500.00 to the Mountain Top Boys Home, a home for the rehabilitation of boys with emotional or other personal problems. Mrs. Ann Johnson, wife of club member Jim Johnson, received the donation on behalf of the club. In June of 1991, the club again came to the aid of the boys at Mountain Top by donating money to purchase baseball uniforms so that the Home could participate in baseball in their area.



Mountain Top Boys Home . . .



In September, 1990, the Vinings Rotary Club voted to donate \$500.00 to the Mountain Top Boys Home, a home for the rehabilitation



September 26, 1990

Dear Friends,

Thank you very much for your generous donation to Mountain Top Boys Home. Your help will go a long way towards redirecting troubled boys' lives.

The Board of Directors, the staff, and especially the residents of the

Mountain Top Boys Home . . .



MOUNTAIN TOP

— helping boys grow —

PHYSICALLY

Residents plant and harvest the food they need to prepare their own well-balanced meals.

MENTALLY

Residents follow prescribed programs of individualized academic instruction.

EMOTIONALLY

Through counseling and group discussion, residents learn to verbalize their feelings and understand their own behaviors.

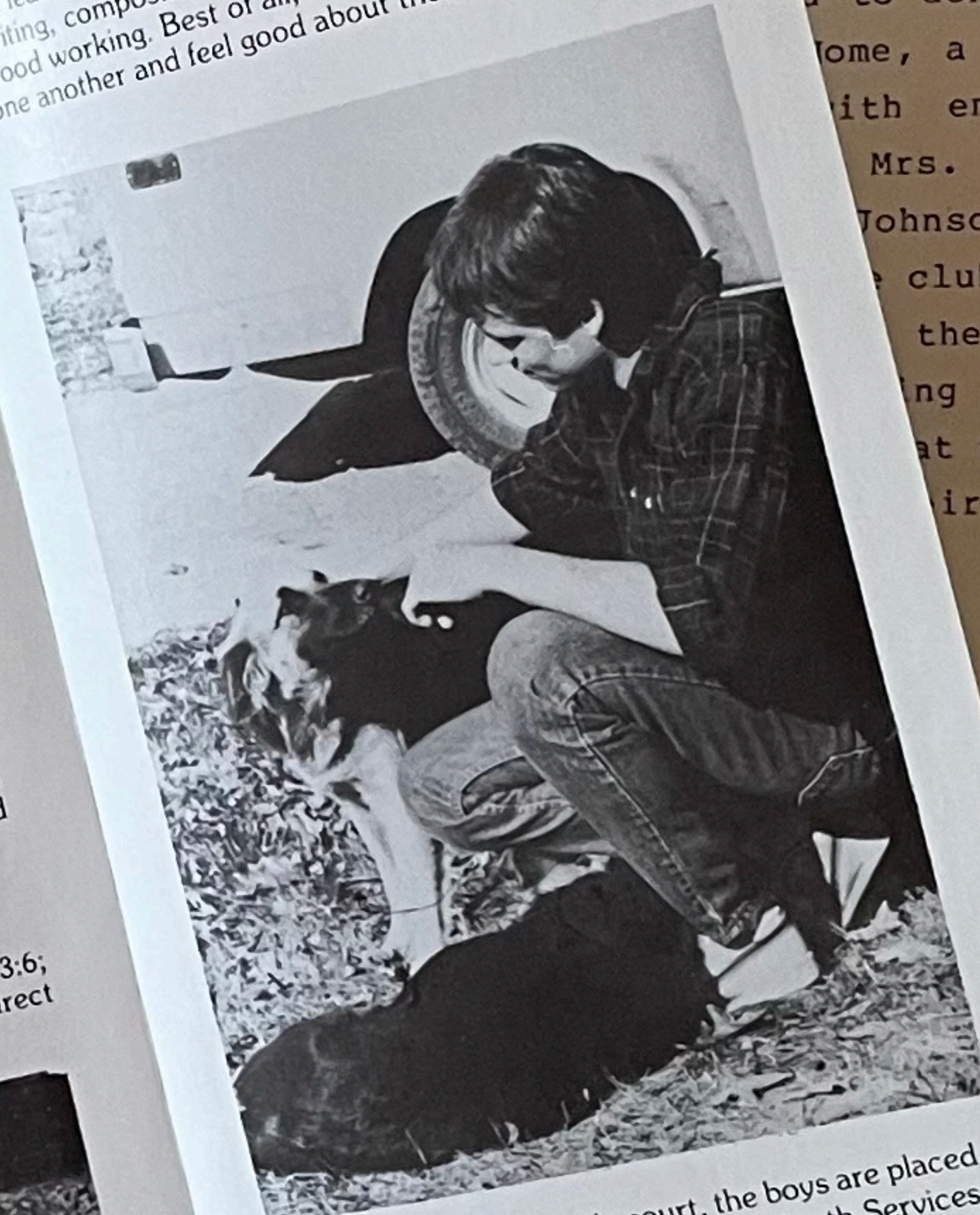
SOCIALLY

Constant interaction with staff members and peers demands that residents exhibit respect and consideration toward others.

SPIRITUALLY

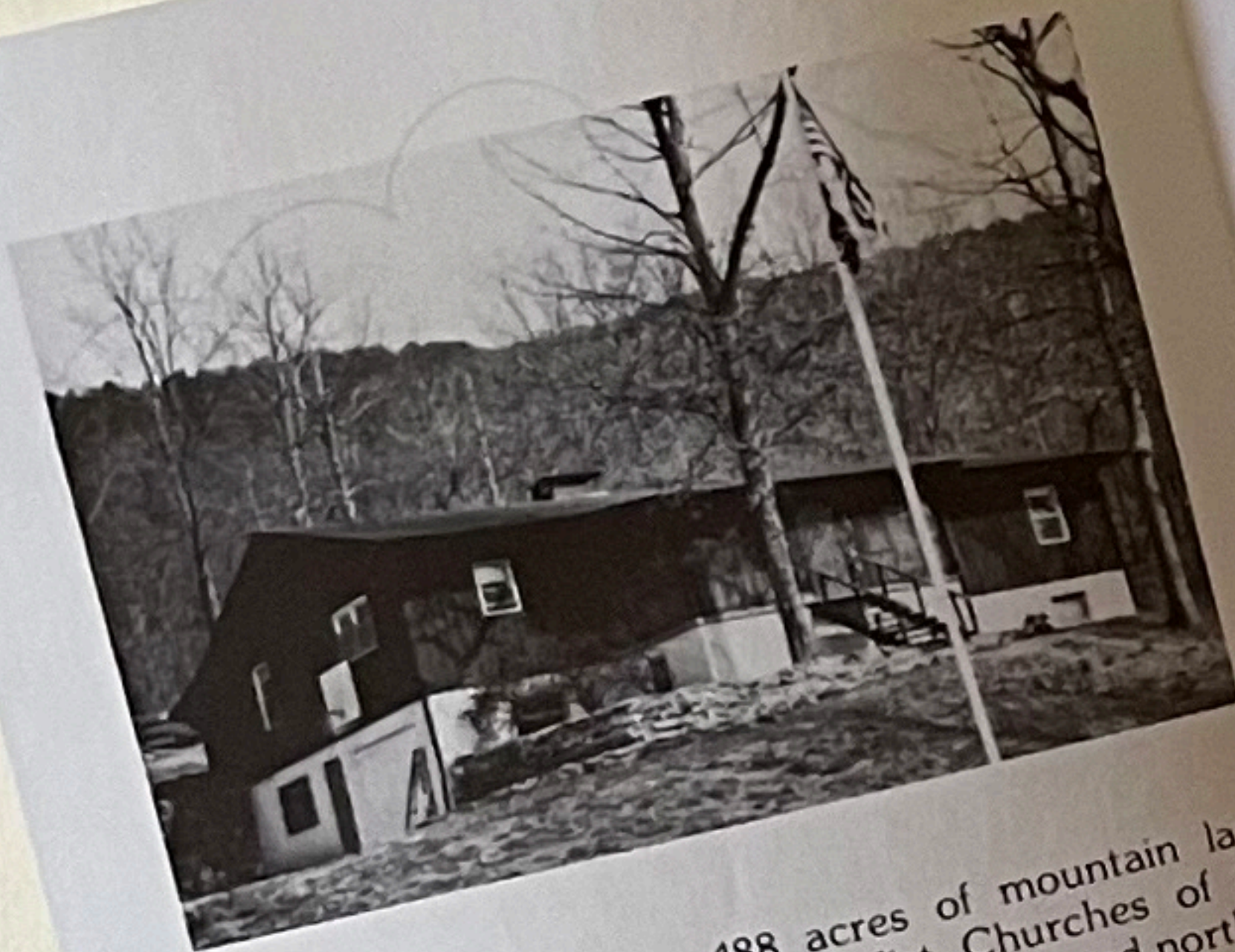
The Mountain Top program is based on Proverbs 3:6; "In all thy ways acknowledge Him, and He shall direct thy paths."

The success rate at Mountain Top is very high. The boys are learning such invaluable, yet basic, skills as reading, writing, composition, cooking, home maintenance, and wood working. Best of all, they are learning to live with one another and feel good about themselves.

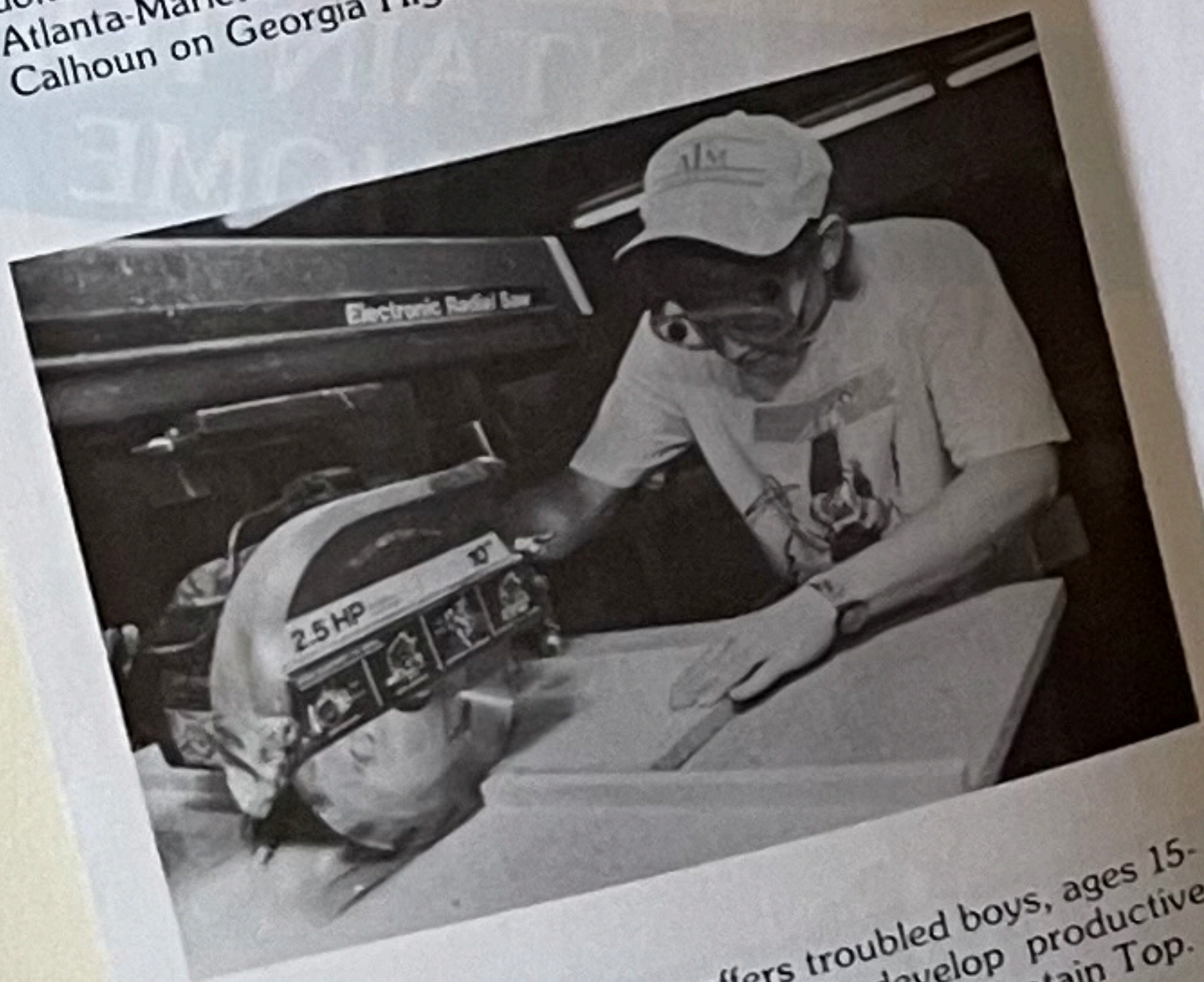


After a hearing in a juvenile court, the boys are placed at the home by the Georgia Division of Youth Services or the Department of Family and Children Services when an alternative to incarceration is ruled appropriate. The program is cost effective in that it saves more than forty dollars per day of the cost otherwise the responsibility of the state.

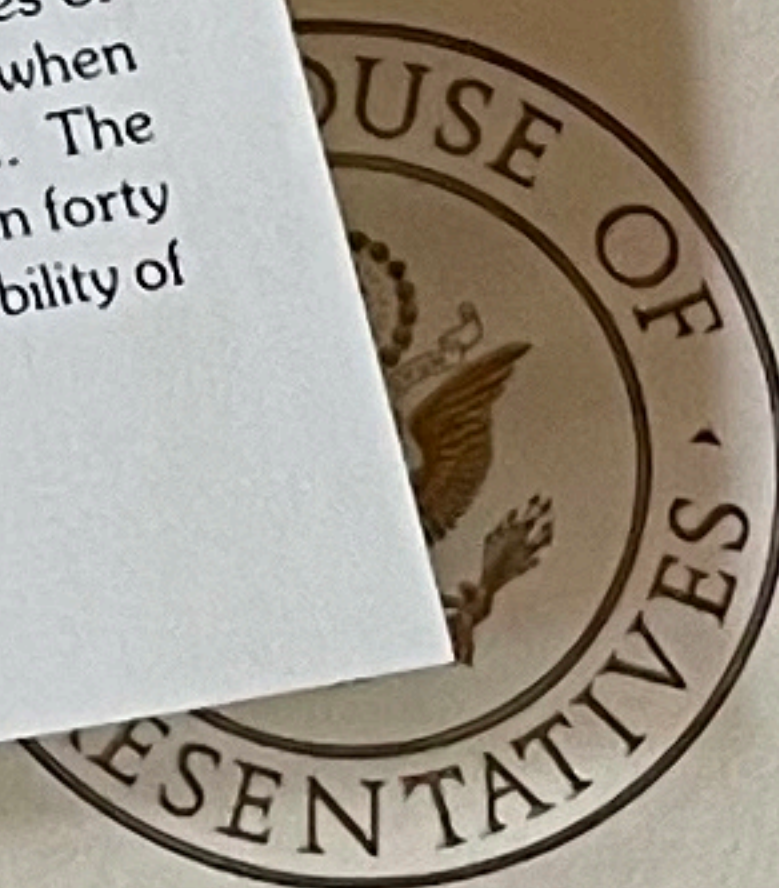
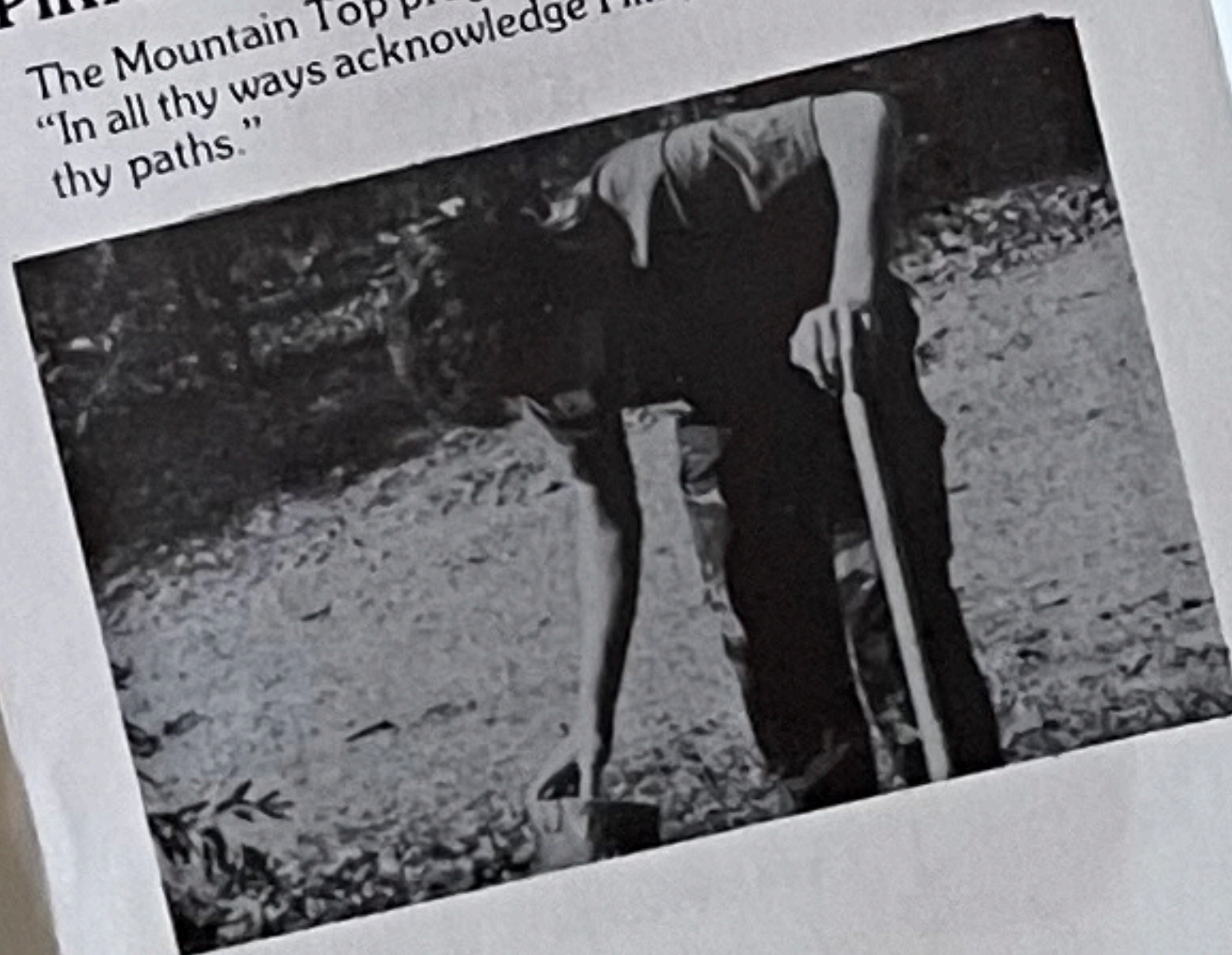
September, 1990, the Vinings Rotary Club donated \$500.00 to the Mountain Top Boys Home, a home for the rehabilitation of boys with emotional or other personal problems. Mrs. Ann Johnson, wife of club member Mr. Johnson, received the donation on behalf of the club. In June of 1991, the club donated the aid of the boys at Mountain Top to purchase baseball equipment so that the boys at the Home could participate in their area.



Mountain Top sits on 488 acres of mountain land donated by the United Methodist Churches of the Atlanta-Marietta District. The home is located north of Calhoun on Georgia Highway 136.



New Horizons Ministries offers troubled boys, ages 15-17, a structured opportunity to develop productive lifestyles while working and learning at Mountain Top.



The Vinings Library Garden Project

Perhaps our most visible community service project during the 1990-91 year was the landscaping of the new Vinings Library that just opened in our community. With the help and dedication of Mr. Roy Adams and Mr. Bob Voyles, and with the muscle of many more members, we had a sprinkler system installed and planted trees, plants, flowers, and shrubs that turned the plain landscape of the new library into a virtual show place. A bronze plaque has now been placed at the library in appreciation of our efforts. Also, we have committed to maintain the landscape at the library as an ongoing project of the club.



RICE, III
100 FERRY ROAD, N.W.
ATLANTA, GEORGIA 30339

KERR
WENT
WOOD

BALSLEY

MUIR
AT-ARMS
STEPHENS

SCHUSTER

MIELE

August 24, 1990

- Mr. Roy Adams
- Mr. Robert Voyles
- Mr. Steve Kerr
- Mr. Keith Lutz
- Ms. Nancy Schuster
- Mr. Tom Vickery
- Mr. Yvonda Goydich
- Mr. James Callaham

RE: The Vinings Library Garden Project

Dear folks,

Roy Adams has agreed to take charge of planting a garden and installing an irrigation system at the new library for our club.

To avoid Roy having to do all this work himself (which he is inclined to do), I am suggesting that Roy get with all of you, who are either on the Community Beautification or the Special Projects Committee, to coordinate the efforts. Fall would seem to be the best time to do the planting.

This is an ambitious project for the club, and I am sure we will do it well.

Best personal regards,

Leon L. Rice, III

LLR/ea

NIA

RECEIVED

MAR 04 1991

SCHUSTER

sooner about the pricing on the Library items have been accomplished:

by Roy Ashley & Associates (and presented go);

Parker, Branch Manager and Executive Vice services, to donate a substantial portion of the (orth);

require an additional expenditure of \$5,300.

All of these items are outlined in the attached letter.

I have talked with Leon Rice and Roy Adams briefly about this and suggest that we do a modified planting scheme incorporating only those donated plants. If we do the same, we will still need to furnish pine straw and fill material for the plants themselves. Do any of you have a source where we could get this material donated? In addition, we will need to obtain some annual flowers (i.e., pansies, or if we plant by late March, possibly other spring and summer flowers like Petunias, etc.) for the flower bed portions in front of the project.

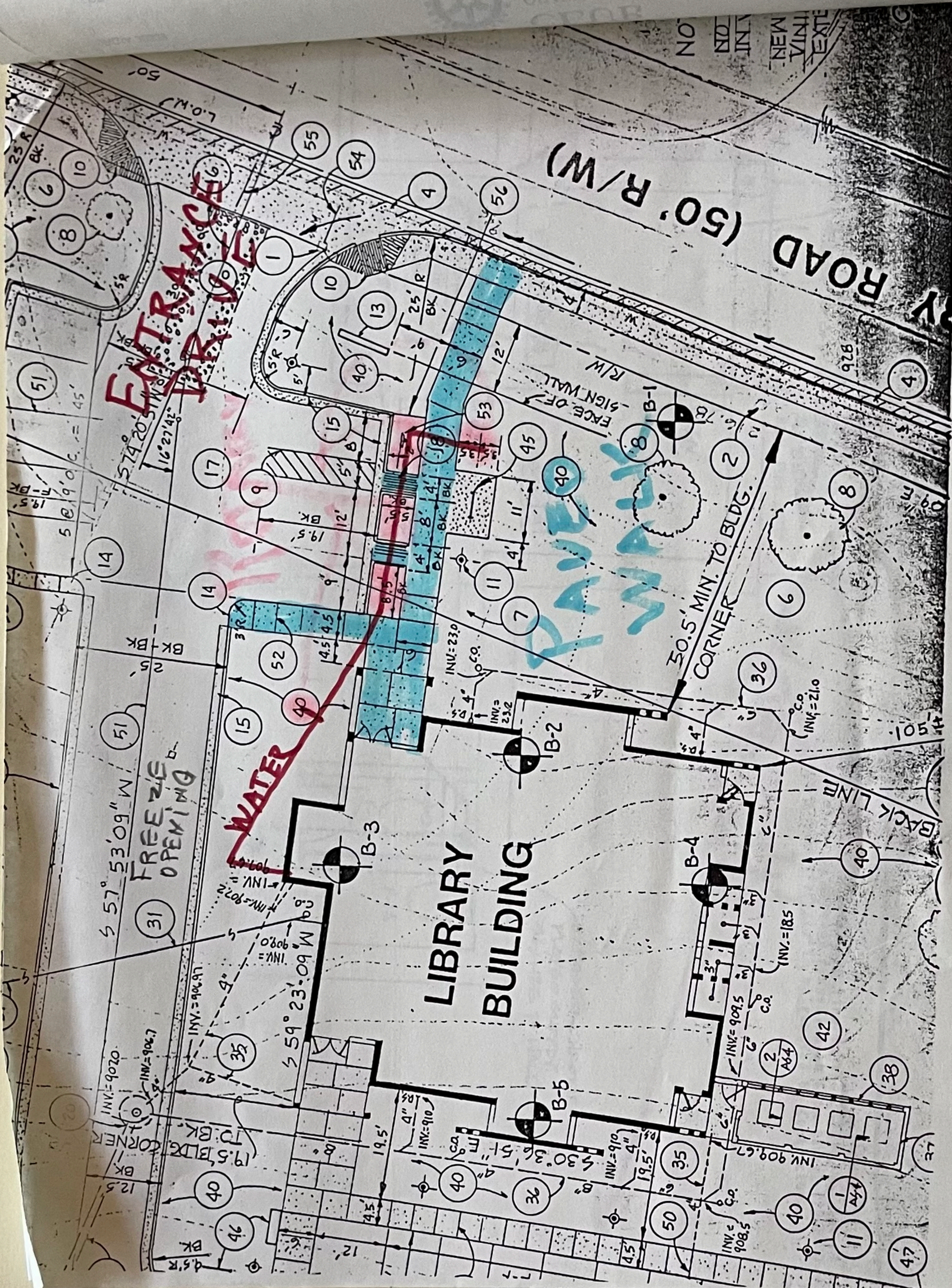
Finally, I think that a Saturday work day to install all the plant material will be most useful and would be a great project for the entire club. We will need to decide on a time for that, and I am open to your suggestions. The earlier in March or April we do it will be more beneficial for the plants getting "rooted" prior to warm weather.

I will be out of town on vacation next week with my family but would like Roy to call a meeting after next Wednesday's Rotary Club to briefly discuss these items. Enclosed for your benefit is a plan of the landscaped area. Thanks for your help.

RPV/sm

Enclosure

cc: Leon Rice w/enclosure



NIA

RECEIVED

MAR 04 1991

USTER

u sooner about the pricing on the Library items have been accomplished:

by Roy Ashley & Associates (and presented go);

Parker, Branch Manager and Executive Vice services, to donate a substantial portion of the orth);

require an additional expenditure of \$5,300.

All of these items are outlined in the attached letter.

I have talked with Leon Rice and Roy Adams briefly about this and suggest that we do a modified planting scheme incorporating only those donated plants. If we do the same, we will still need to furnish pine straw and fill material for the plants themselves. Do any of you have a source where we could get this material donated? In addition, we will need to obtain some annual flowers (i.e., pansies, or if we plant by late March, possibly other spring and summer flowers like Petunias, etc.) for the flower bed portions in front of the project.

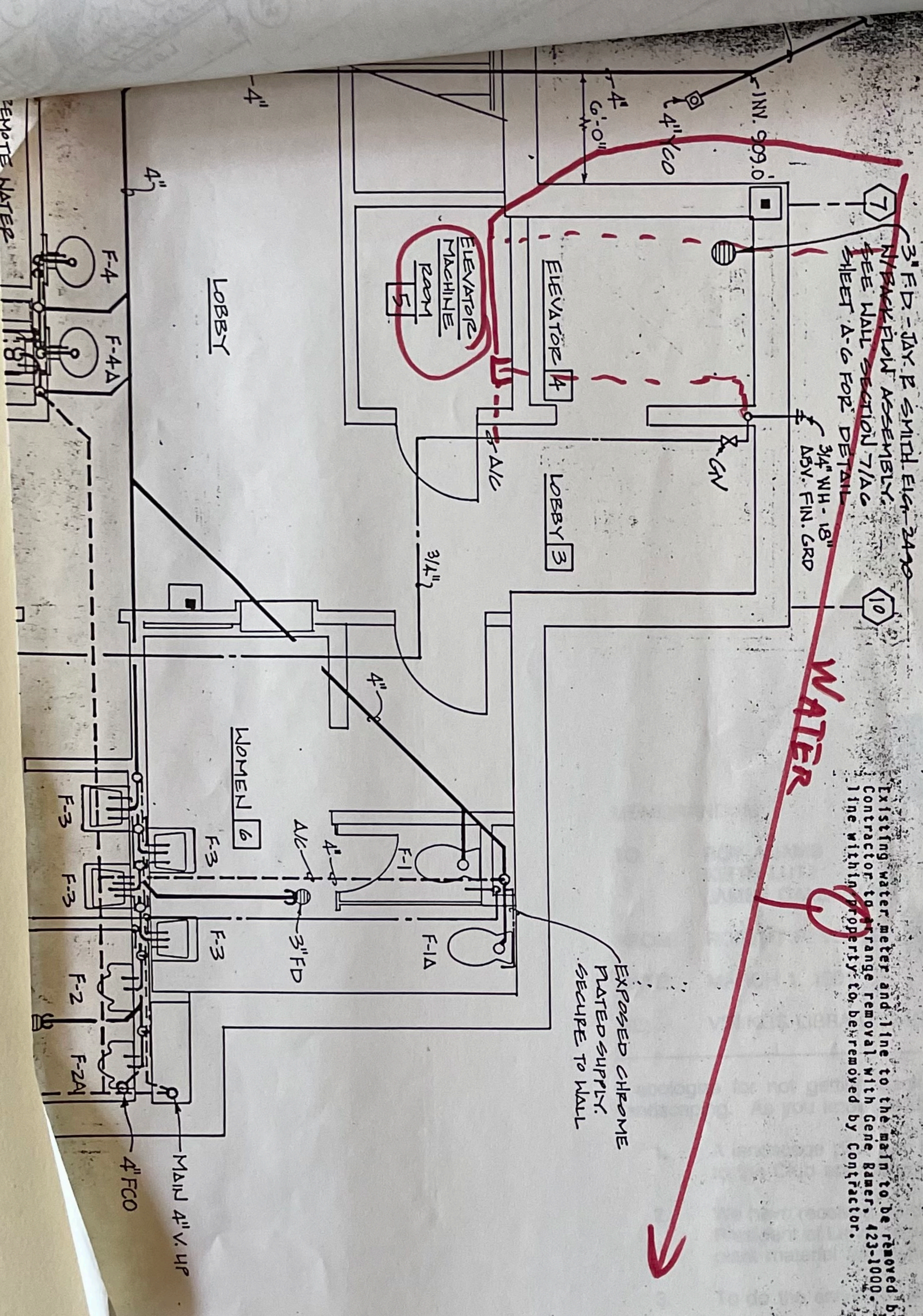
Finally, I think that a Saturday work day to install all the plant material will be most useful and would be a great project for the entire club. We will need to decide on a time for that, and I am open to your suggestions. The earlier in March or April we do it will be more beneficial for the plants getting "rooted" prior to warm weather.

I will be out of town on vacation next week with my family but would like Roy to call a meeting after next Wednesday's Rotary Club to briefly discuss these items. Enclosed for your benefit is a plan of the landscaped area. Thanks for your help.

RPV/sm

Enclosure

cc: Leon Rice w/enclosure



3" F.D. - JAY E SMITH ELEC 240
 N/BACKLUM ASSEMBLY
 FEE WALL SECTION 7/AC
 SHEET A-6 FOR DETAIL

WATER

Existing water meter and line to the main to be removed by Contractor to arrange removal with Gene Bamer, 423-1000. Line within property to be removed by Contractor.

EXPOSED CHROME
 PLATED SUPPLY.
 SECURE TO WALL

NIA

RECEIVED

MAR 04 1991

IR
 HUSTER

ou sooner about the pricing on the Library
 ng items have been accomplished:

by Roy Ashley & Associates (and presented
 ago);

e Parker, Branch Manager and Executive Vice
 Services, to donate a substantial portion of the
 worth);

ll require an additional expenditure of \$5,300.

All of these items are outlined in the attached letter.

I have talked with Leon Rice and Roy Adams briefly about this and suggest that we do a modified planting scheme incorporating only those donated plants. If we do the same, we will still need to furnish pine straw and fill material for the plants themselves. Do any of you have a source where we could get this material donated? In addition, we will need to obtain some annual flowers (i.e., pansies, or if we plant by late March, possibly other spring and summer flowers like Petunias, etc.) for the flower bed portions in front of the project.

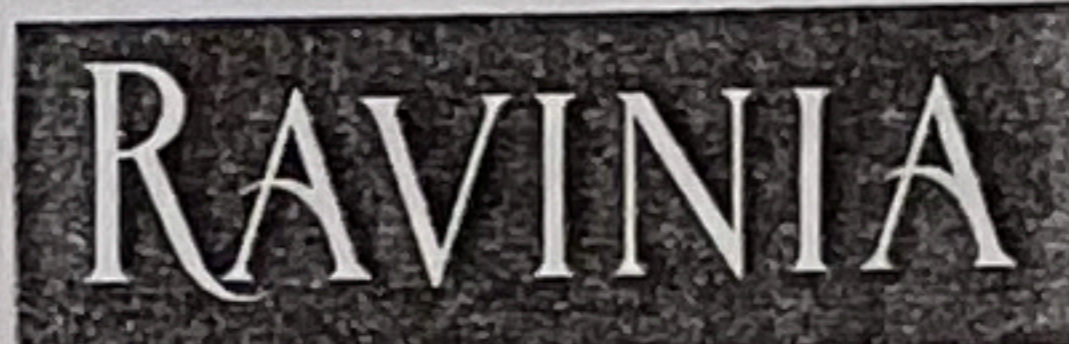
Finally, I think that a Saturday work day to install all the plant material will be most useful and would be a great project for the entire club. We will need to decide on a time for that, and I am open to your suggestions. The earlier in March or April we do it will be more beneficial for the plants getting "rooted" prior to warm weather.

I will be out of town on vacation next week with my family but would like Roy to call a meeting after next Wednesday's Rotary Club to briefly discuss these items. Enclosed for your benefit is a plan of the landscaped area. Thanks for your help.

RPV/sm

Enclosure

cc: Leon Rice w/enclosure

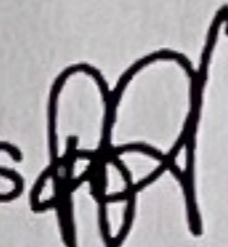


RECEIVED

MAR 04 1991

MEMORANDUM

TO: ROY ADAMS STEVE KERR
KEITH LUTZ NANCY SCHUSTER
JAMES CALLAHAN

FROM: ROBERT P. VOYLES 

DATE: MARCH 1, 1991

RE: VININGS LIBRARY GARDEN PROJECT

I apologize for not getting back to each of you sooner about the pricing on the Library landscaping. As you know, to date the following items have been accomplished:

1. A landscape plan has been prepared by Roy Ashley & Associates (and presented to the Club approximately five weeks ago);
2. We have received an offer from Charlie Parker, Branch Manager and Executive Vice President of Landscape Management Services, to donate a substantial portion of the plant material (approximately \$2,300 worth);
3. To do the entire remaining portion will require an additional expenditure of \$5,300.

All of these items are outlined in the attached letter.

I have talked with Leon Rice and Roy Adams briefly about this and suggest that we do a modified planting scheme incorporating only those donated plants. If we do the same, we will still need to furnish pine straw and fill material for the plants themselves. Do any of you have a source where we could get this material donated? In addition, we will need to obtain some annual flowers (i.e., pansies, or if we plant by late March, possibly other spring and summer flowers like Petunias, etc.) for the flower bed portions in front of the project.

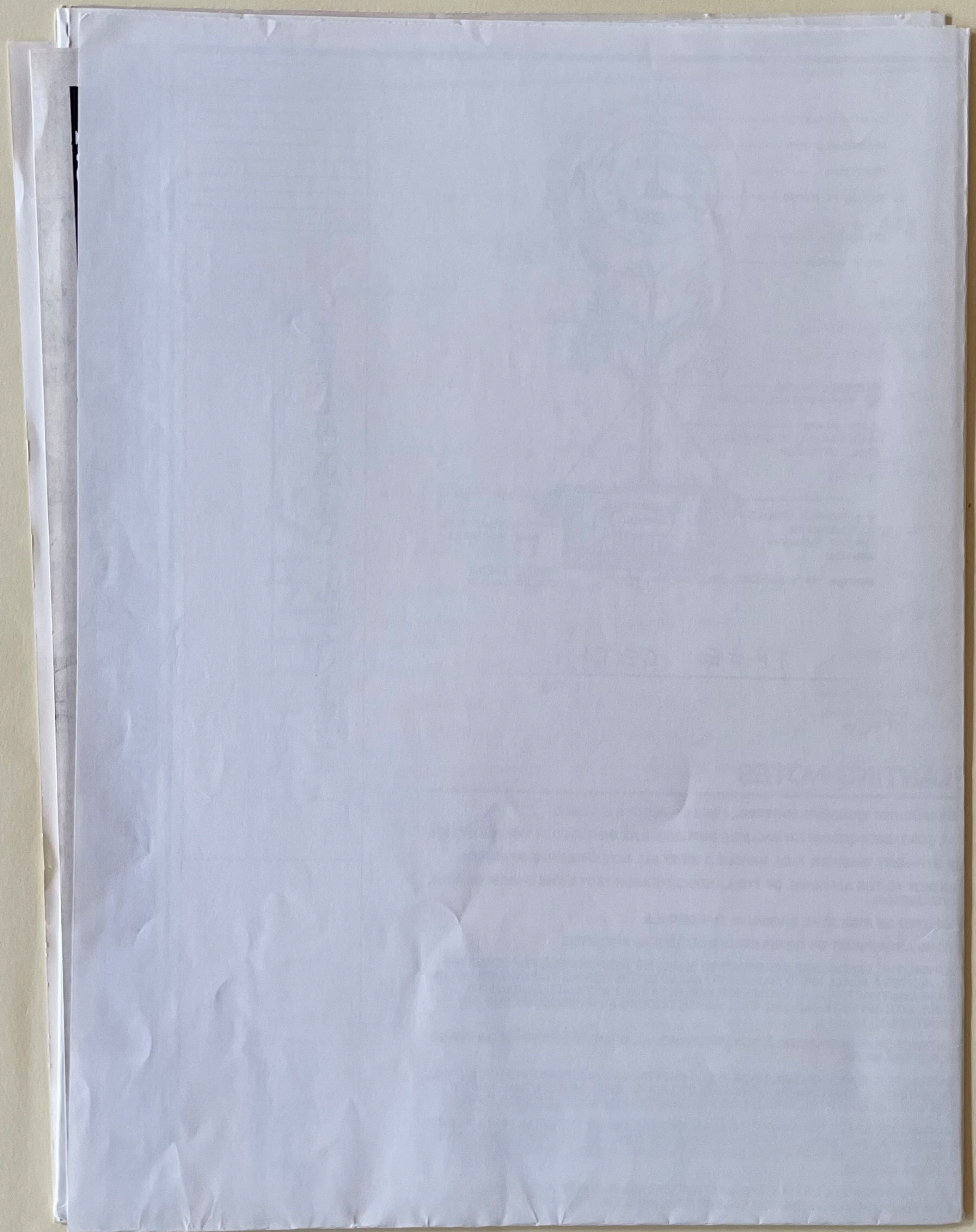
Finally, I think that a Saturday work day to install all the plant material will be most useful and would be a great project for the entire club. We will need to decide on a time for that, and I am open to your suggestions. The earlier in March or April we do it will be more beneficial for the plants getting "rooted" prior to warm weather.

I will be out of town on vacation next week with my family but would like Roy to call a meeting after next Wednesday's Rotary Club to briefly discuss these items. Enclosed for your benefit is a plan of the landscaped area. Thanks for your help.

RPV/sm

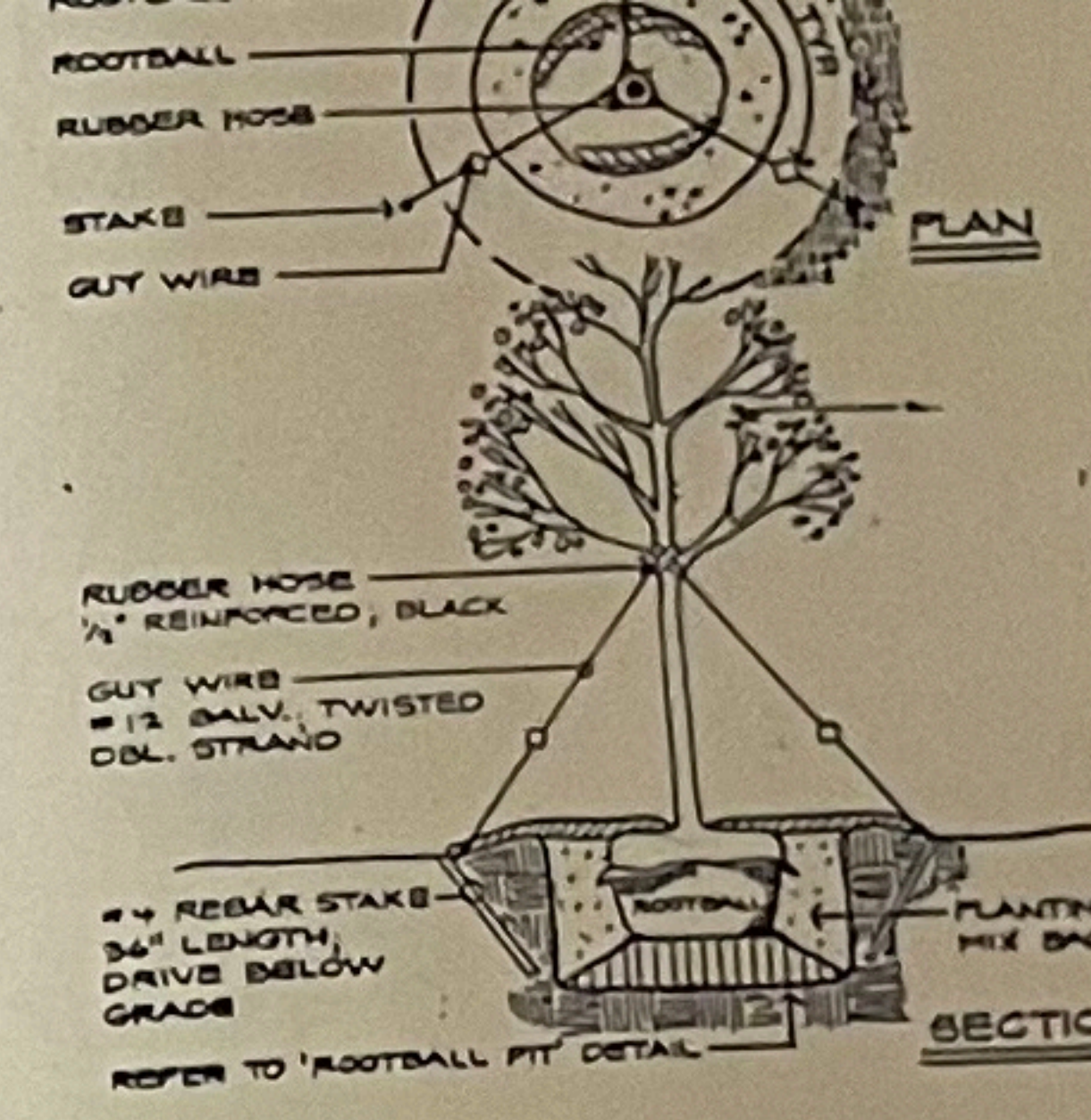
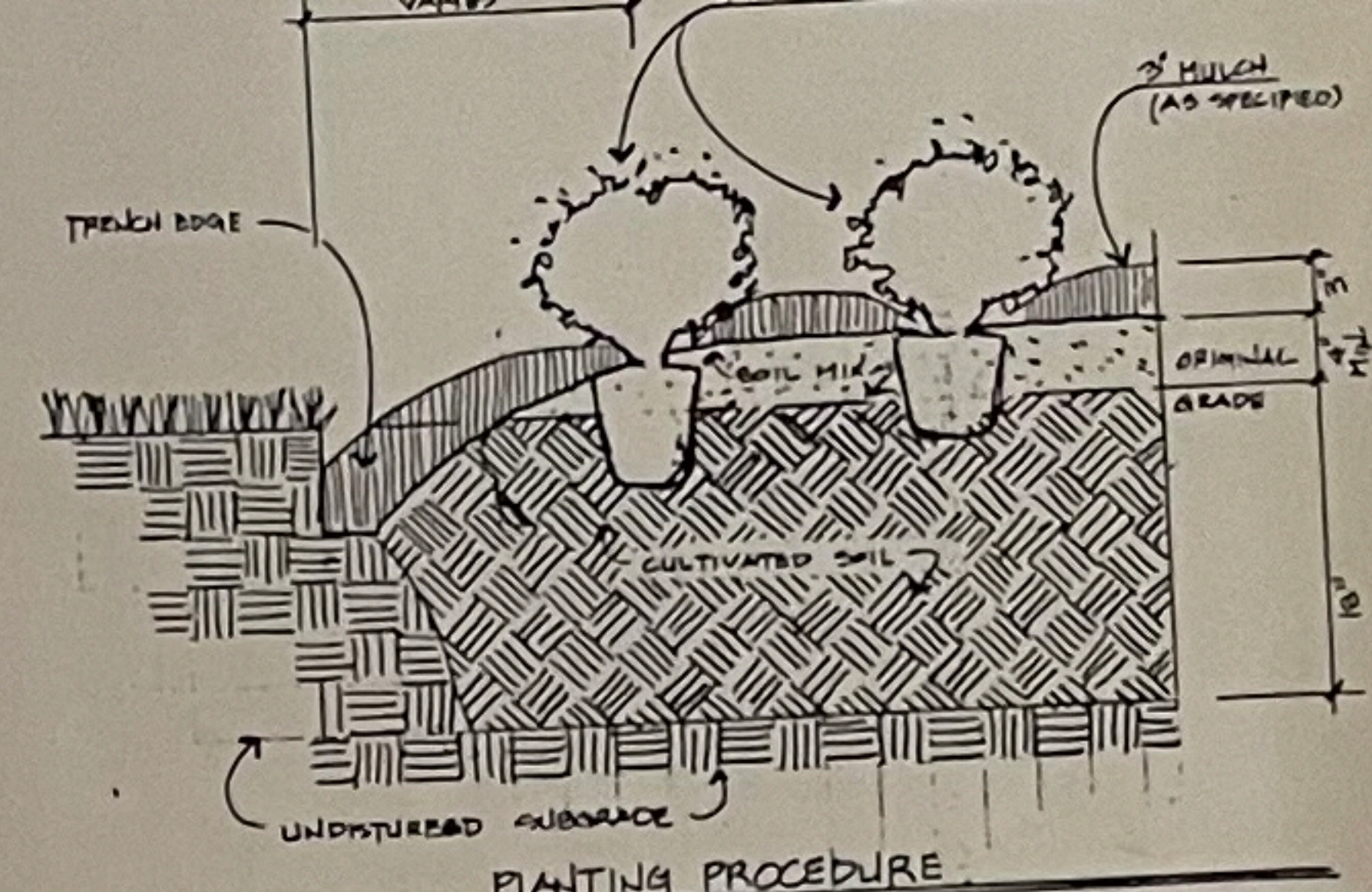
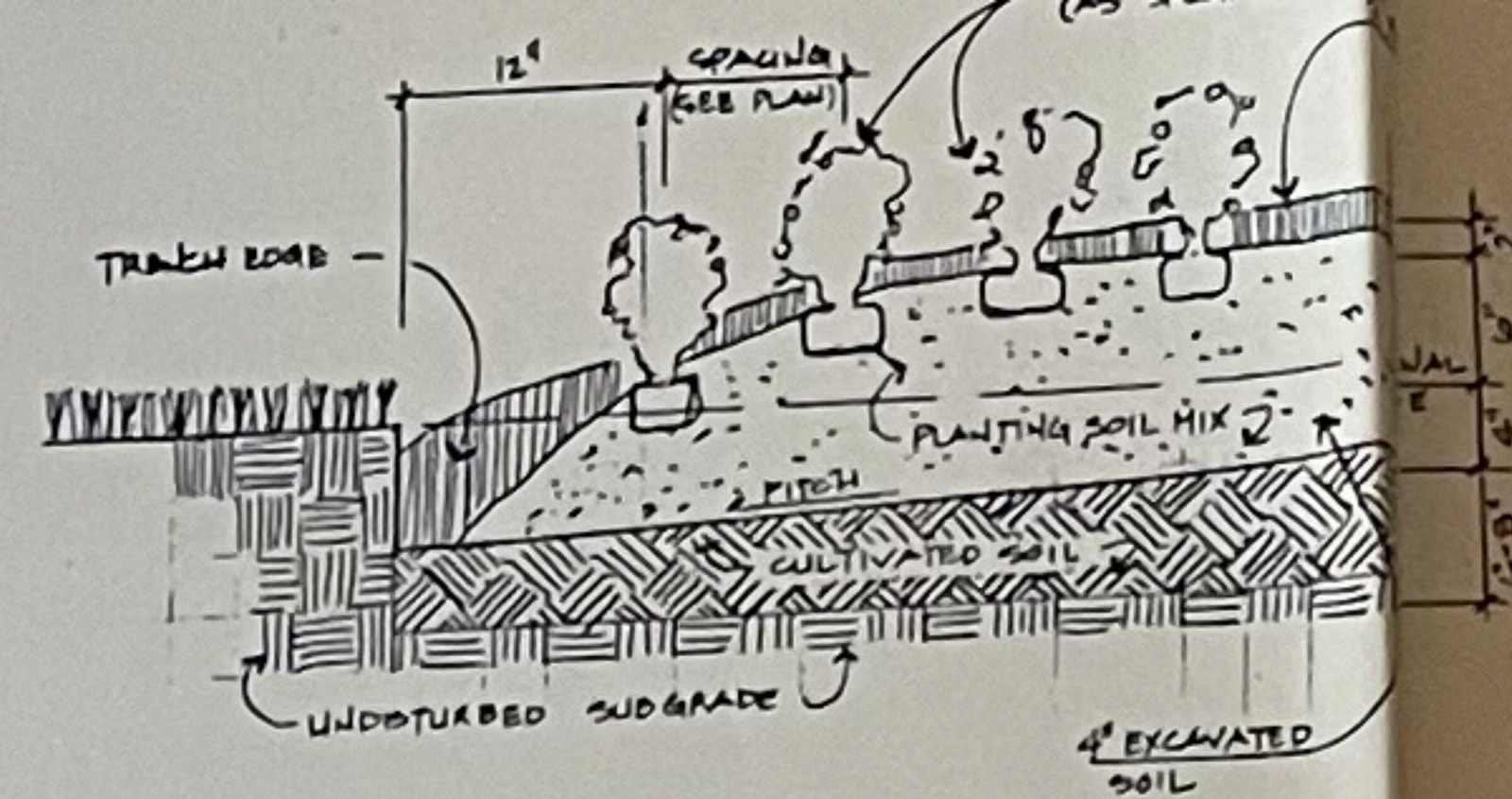
Enclosure

cc: Leon Rice w/enclosure



PLANTING SOIL MIX

- LANDSCAPE CONTRACTOR SHALL SUPPLY ALL PLANTING SOIL. PLANTING SOIL SHALL BE MIXED AND STORED ON SITE.
- LANDSCAPE CONTRACTOR SHALL FURNISH (FROM HIS SOURCE) A GOOD CLEAN, DARK, LOAMY TOPSOIL. TOPSOIL MUST BE APPROVED BY THE LANDSCAPE ARCHITECT.
- THE PLANTING SOIL MIX MUST BE APPROVED BY THE LANDSCAPE ARCHITECT PRIOR TO ANY BACKFILLING.
- THE PLANTING SOIL MIX SHALL CONSIST OF THE FOLLOWING:
 FOR TREES, SHRUBS AND GROUNDCOVERS
 80% TOPSOIL
 20% PREPARED ADDITIVES (BY VOLUME AS FOLLOWS):
 3 PARTS HUMUS (FOREST OR PEAT)
 1 PART STERILIZED COW MANURE
 COMMERCIAL FERTILIZER @ 4 LBS./CU. YD.
 LIMX (AS RECOMMENDED IN SOIL ANALYSIS)



PLANTING PROCEDURE

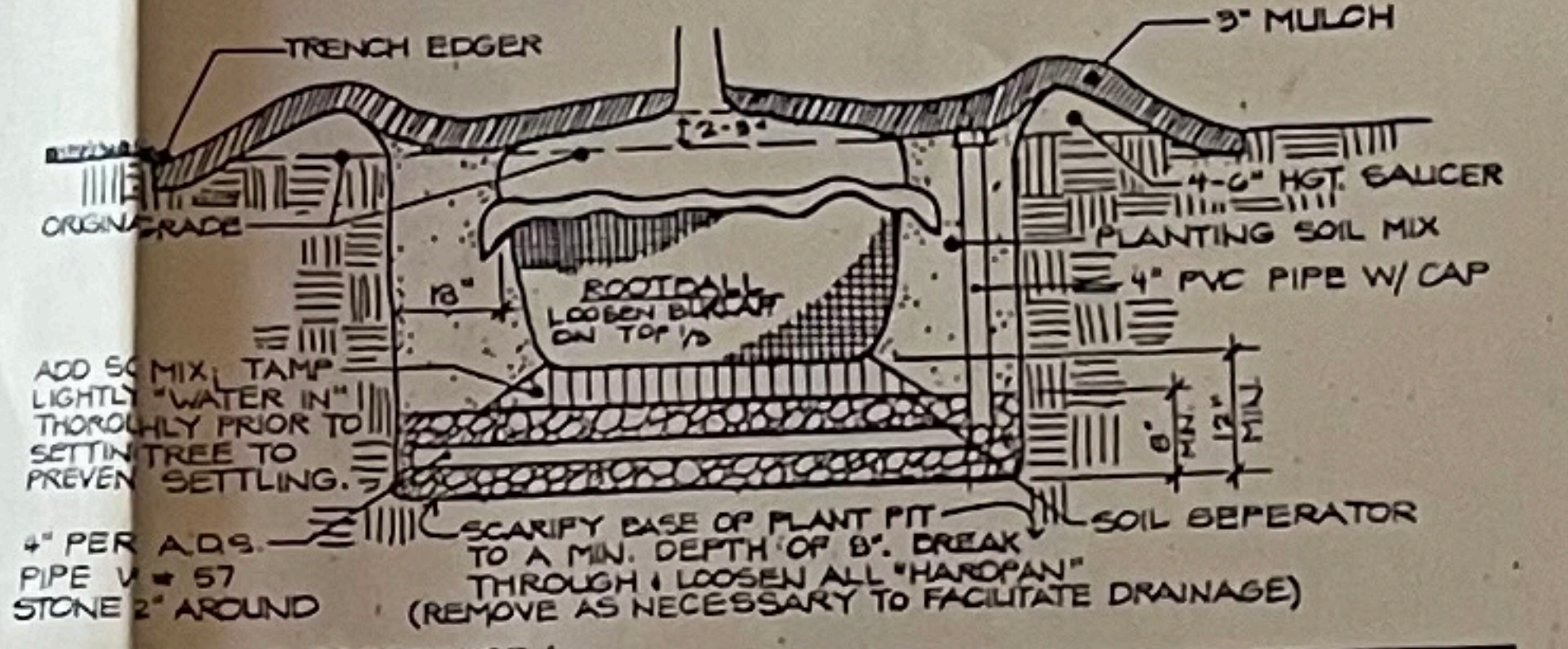
- LAYOUT BED AND OUTLINE WITH TRENCH EDGE. PLACE GUY FROM EDGE WITHIN BED.
- ROOTBALL BED TO 18" DEPTH. SPREAD 4" MULCH LAYER OF PLANTING SOIL MIX OVER BED. ROOTBALL SOIL MIX INTO TOP OF BED. INSTALL PLANTS, MULCH AND WATER.

GENERAL PLANTING NOTES

- ALL PLANTS MUST BE HEALTHY, VIGOROUS MATERIAL, FREE OF PESTS & DISEASE.
- ALL PLANTS MUST BE CONTAINER-GROWN OR BALLED & BURLAPPED AS INDICATED IN THE PLANT LIST.
- ALL TREES MUST BE STRAIGHT TRUNKED, FULL HEADED & MEET ALL REQUIREMENTS SPECIFIED.
- ALL PLANTS ARE SUBJECT TO THE APPROVAL OF THE LANDSCAPE ARCHITECT & THE OWNER BEFORE, DURING & AFTER INSTALLATION.
- ALL TREES MUST BE GUYED OR STAKED AS SHOWN IN THE DETAILS.
- ALL PLANTS & PLANTING AREAS MUST BE COMPLETELY MULCHED AS SPECIFIED.
- PRIOR TO CONSTRUCTION, THE LANDSCAPE CONTRACTOR SHALL BE RESPONSIBLE FOR LOCATING ALL UNDERGROUND UTILITIES & SHALL AVOID DAMAGE TO ALL UTILITIES DURING THE COURSE OF THE WORK. THE LANDSCAPE CONTRACTOR IS RESPONSIBLE FOR REPAIRING ANY & ALL DAMAGE TO UTILITIES, STRUCTURES, SITE APPURTENANCES, ETC., WHICH OCCURS AS A RESULT OF THE LANDSCAPE CONSTRUCTION.
- THE LANDSCAPE CONTRACTOR IS RESPONSIBLE FOR VERIFYING ALL QUANTITIES SHOWN ON THESE PLANS, BEFORE PRICING THE WORK.
- THE LANDSCAPE CONTRACTOR IS RESPONSIBLE FOR FULLY MAINTAINING ALL PLANTING (INCLUDING ALL UNDERGROUND UTILITIES & SHALL AVOID DAMAGE TO ALL UTILITIES DURING THE COURSE OF THE WORK. THE LANDSCAPE CONTRACTOR IS RESPONSIBLE FOR REPAIRING ANY & ALL DAMAGE TO UTILITIES, STRUCTURES, SITE APPURTENANCES, ETC., WHICH OCCURS AS A RESULT OF THE LANDSCAPE CONSTRUCTION.
- THE LANDSCAPE CONTRACTOR SHALL COMPLETELY GUARANTEE ALL PLANT MATERIAL FOR A PERIOD OF ONE (1) YEAR BEGINNING AT THE DATE OF TOTAL ACCEPTANCE. THE LANDSCAPE CONTRACTOR SHALL PROMPTLY MAKE ALL REPLACEMENTS BEFORE OR AT THE END OF THE GUARANTEE PERIOD (AS PER DIRECTION OF THE OWNER).
- THE OWNER AGREES TO PERFORM ALL LANDSCAPE MAINTENANCE (INCLUDING WATERING) THROUGHOUT THE ONE-YEAR GUARANTEE PERIOD UNLESS OTHERWISE DETERMINED.
- THE LANDSCAPE CONTRACTOR WILL APPROVE THE STAKED LOCATION OF ALL PLANT MATERIAL PRIOR TO INSTALLATION.
- AFTER BEING DUG AT THE NURSERY SOURCE, ALL TREES IN LEAF SHALL BE ACCUMULATED FOR TWO (2) WEEKS UNDER A MIST SYSTEM PRIOR TO INSTALLATION.
- ANY PLANT MATERIAL WHICH DIES, TURNS BROWN OR DEFLOLIATES (PRIOR TO TOTAL ACCEPTANCE OF THE WORK) SHALL BE PROMPTLY REMOVED FROM THE SITE AND REPLACED WITH MATERIAL OF THE SAME SPECIES, QUANTITY, SIZE, AND MEETING ALL PLANT LIST SPECIFICATIONS.
- STANDARDS SET FORTH IN "AMERICAN STANDARD FOR NURSERY STOCK" REPRESENT GUIDELINE SPECIFICATIONS ONLY AND SHALL CONSTITUTE MINIMUM QUALITY REQUIREMENTS FOR PLANT MATERIAL.
- CONTRACTOR RESPONSIBLE FOR REMOVING EXIST. SOIL & PREPARATION OF PLANTING BEDS. ALL DEBRIS TO BE REMOVED FROM THE SITE.

GENERAL NOTES:

- SPECIFICATIONS FOR DRAINAGE TEST REQUIREMENTS PRIOR TO PLANTING. SEC. 02480.
- DO NOT ALLOW AIR POCKETS TO FORM WHEN BACKFILLING.
- IMMEDIATELY SOAK WITH WATER.
- DO NOT BREAK ROOTBALL.



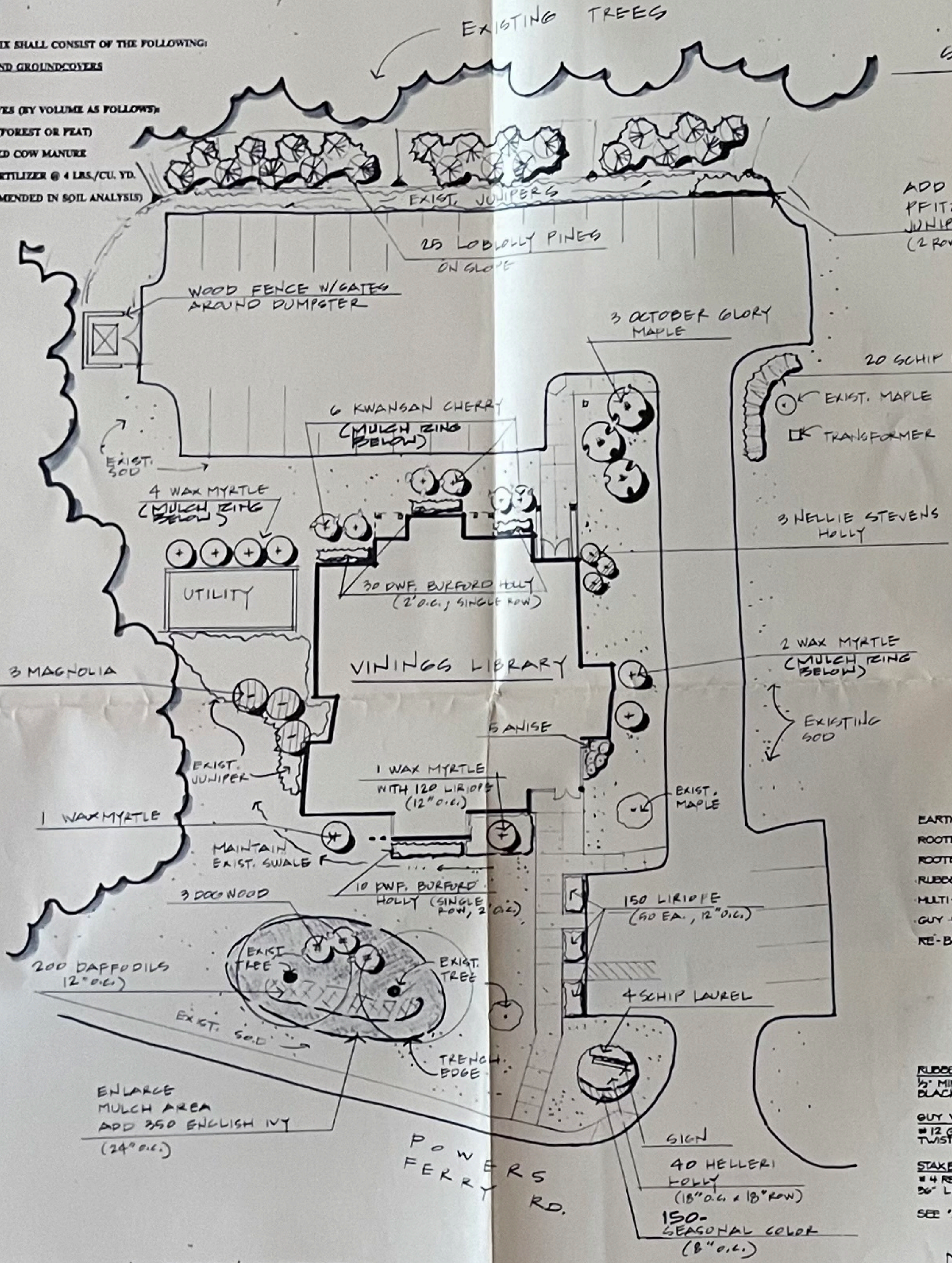
TREE ROOTBALL PIT DETAIL

- EXCAVATE ROOTBALL PIT.
- SCAFFRY PIT. ADD SOIL MIX & TAMP LIGHTLY. WATER IN THOROUGHLY PRIOR TO SETTING TREE TO PREVENT SETTLING.
- PER A.D.S. PIPE V. # 57 STONE AROUND.
- BACKFILL W/ SOIL MIX & CONSTRUCT SAUCER.
- COMPLETE BACKFILLING & ADD MULCH. APPLY TREE WRAP.
- STAKE & GUY SECURELY.

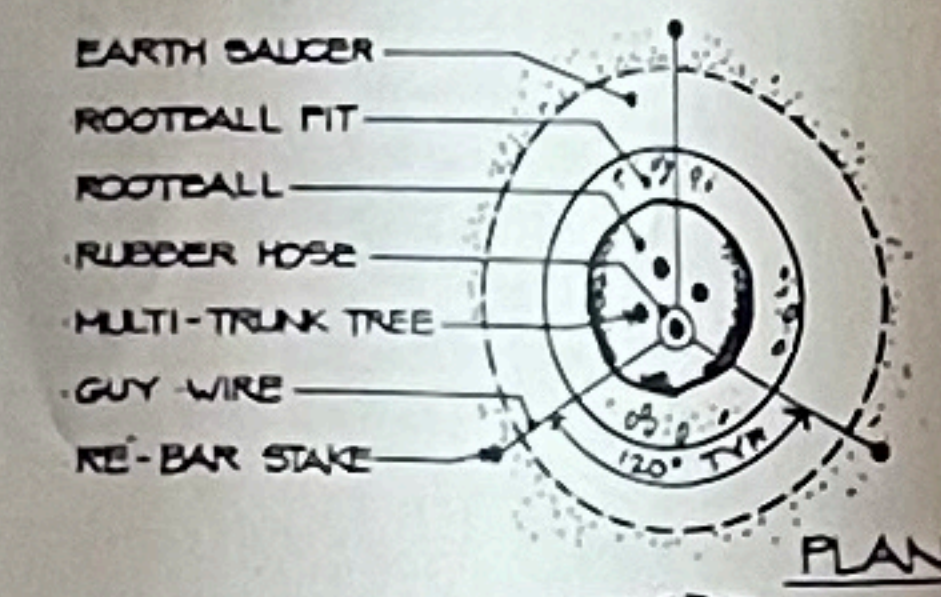
NOTE:

- ATTACH GUYS TO THE CENTRAL LOWEST TRUNK.
- SPACE STAKES EQUALLY AROUND (OUTSIDE) ROOTBALL PIT SUCH THAT GUYS DO NOT COME IN CONTACT WITH OTHER TRUNKS.

SEASONAL COLOR



ADD 15 PRITZER JUNIPER (TO END OF PKG.) (2 ROWS X 2 1/2' O.C.)

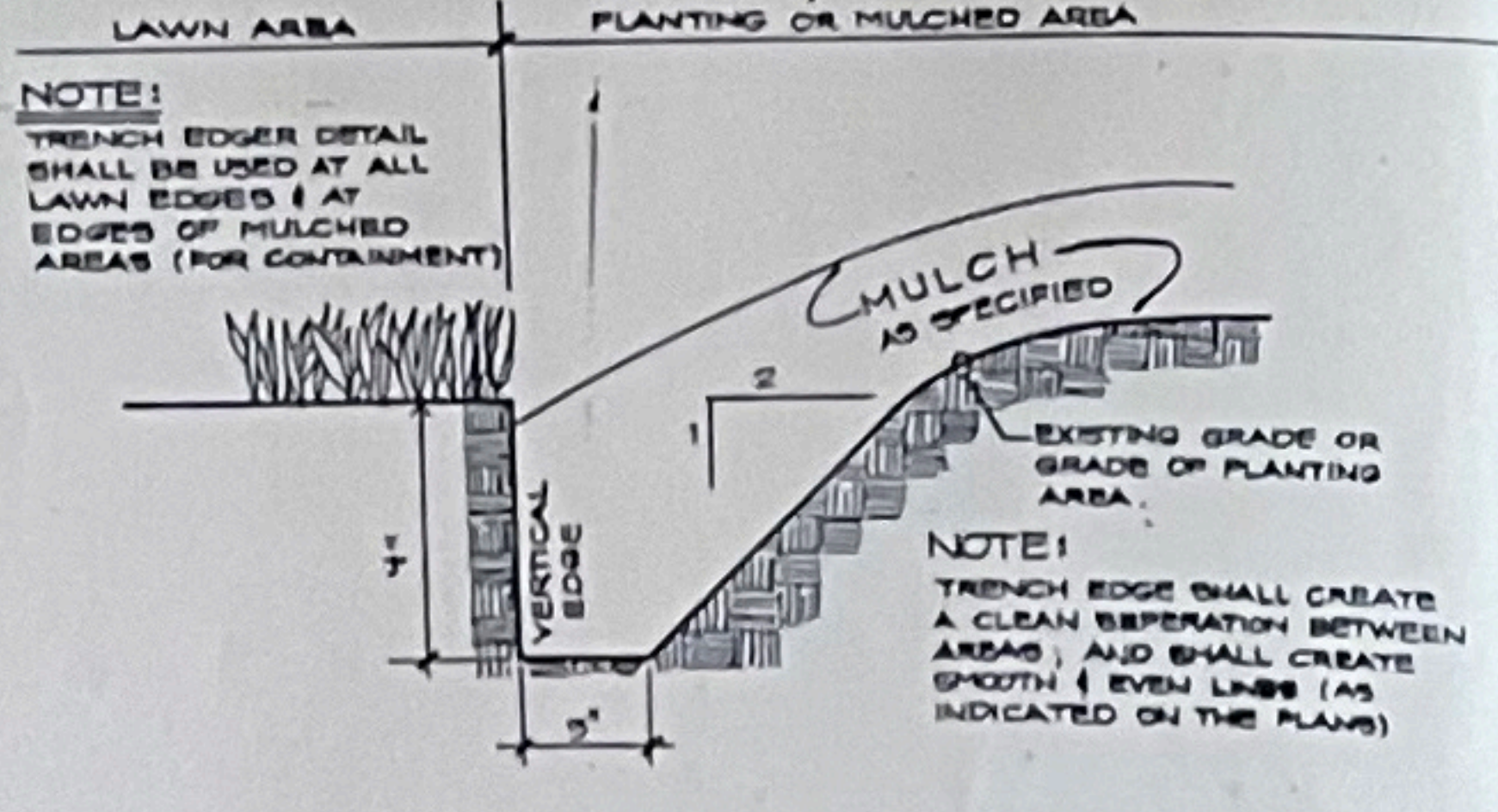


MULTI-TRUNK TREE DETAIL

- ATTACH GUYS TO THE CENTRAL LOWEST TRUNK.
- SPACE STAKES EQUALLY AROUND (OUTSIDE) ROOTBALL PIT SUCH THAT GUYS DO NOT COME IN CONTACT WITH OTHER TRUNKS.

PLANT LIST

QTY.	COMMON NAME	BOTANICAL NAME	CAL.	HT.	GRP.	RT	COMMENTS
3	OCTOBER GLORY MAPLE	ACER RUBRUM 'OCTOBER GLORY'	2 1/2-3"	10-12'	5-6'	D:B	FULL HEAD, MATCHED STRAIGHT TRUNK
6	KWANSAN CHERRY	PRUNUS CERULEA 'KWANSAN'	2-2 1/2"	7-8'	5-MIN.	B:B	" BRANCHED " WELL
3	MAGNOLIA	MAGNOLIA GRANDIFLORA		8-10'	5-MIN.	B:B	FULL TO GROUND
8	TREE FORM WAXMYRTLE	MYRTICA ERIPERA		6'	4-MIN.	B:B	3 MAJOR TRUNKS
3	DOGWOOD (WHITE)	CORNUS FLORIDA		5-6'	4-MIN.	B:B	STRAIGHT TRUNK & WELL BRANCHED
25	LOBLOLLY PINE	PINUS TAEDA	1 1/4 MIN	3-4'	2-MIN.	CONT.	WELL BRANCHED
3	NELLIE STEVENS HOLLY	ILEX X 'NELLIE STEVENS'		4-4 1/2'	30-MIN		DENSE, FULL TO GRD.
24	SCHIP LAUREL	PRUNUS LAUROCEARUS 'SCHIP LAUREL'		15-MIN	8-24"	B:B	DARK GR., FULL
40	DWARF BURFORD HOLLY	ILEX BURFORDIANA		15-18"	12-15"	3 GAL.	FULL, DENSE
40	HELLERI HOLLY	ILEX LAEVEATA 'HELLERI'		15"	18"	2 GAL.	" " " "
15	PRITZER JUNIPER	JUNIPERUS PRITZRIANA		15-18"	15-18"	2 GAL.	" " " " GOOD COLOR
5	ANISE	ILICUM PARVIFLORUM		24-30"	18-MIN.	3 GAL.	" " " "
270	LIRIOPE	LIRIOPE MUGGATA				1 QTY.	" " " " MIN. 3 RUNNER
350	ENGLISH IVY	HEDERA HELIX				1 QTY.	" " " " " "
200	DAFFODIL	DAFFODIL 'TETE A TETE'					BUILD GRADE "A"
150	SEASONAL COLOR	PANSY					4" POT YELLOW



TRENCH EDGE DETAIL

NOTE: TRENCH EDGER DETAIL SHALL BE USED AT ALL LAWN EDGES & AT EDGES OF MULCHED AREAS (FOR CONTAINMENT).

NOTE: TRENCH EDGE SHALL CREATE A CLEAN SEPARATION BETWEEN AREAS, AND SHALL CREATE SMOOTH & EVEN LINES (AS INDICATED ON THE PLANS).

LANDSCAPE DEVELOPMENT PLAN

LIBRARY

VINING'S